

Financial Information –
Tailored For Your Needs

Customised Portals
And Terminals



As a leading provider and operator of customised financial market information systems, Interactive Data Managed Solutions designs, builds and hosts comprehensive, easy-to-use Internet-based portals and terminals. The business also provides developer solutions and tailored delivery of data files.

PrimePortal

PrimePortal integrates various web-based modules to develop customised Internet and intranet solutions for retail banks, private banks, asset managers, online brokers, media portals, investment banks and exchanges. These modules range from quote lists, order books and extended searching capabilities to fact sheets on instruments of various asset classes, professional chart analysis, portfolio tracking and alerts. PrimePortal provides real-time, delayed and daily financial data, news and analyses and can allow the integration of proprietary information.

Revitalise Your Online Presence



PrimeDeveloper

PrimeDeveloper is designed to enable financial service providers' in-house IT teams and development partners to build complex financial information systems on Interactive Data Managed Solutions' market data platform. The offering includes an integrated development environment within the Market Data Gateway platform and standardised programming interfaces, as well as developer training and certification. In addition, the Market Data Gateway provides access to a comprehensive set of normalised market data from various sources.

Increase In-House Development Productivity

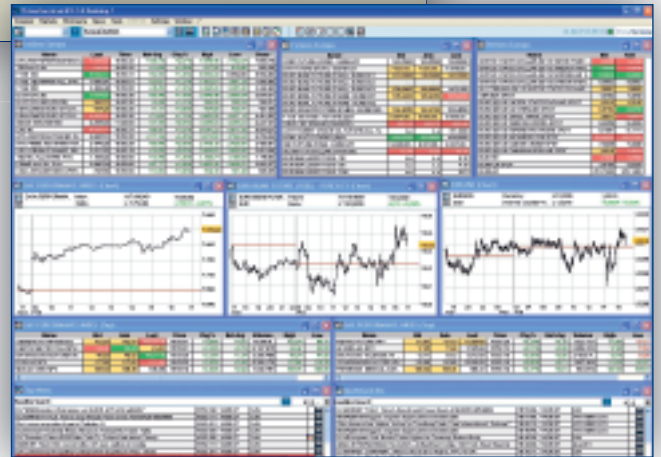
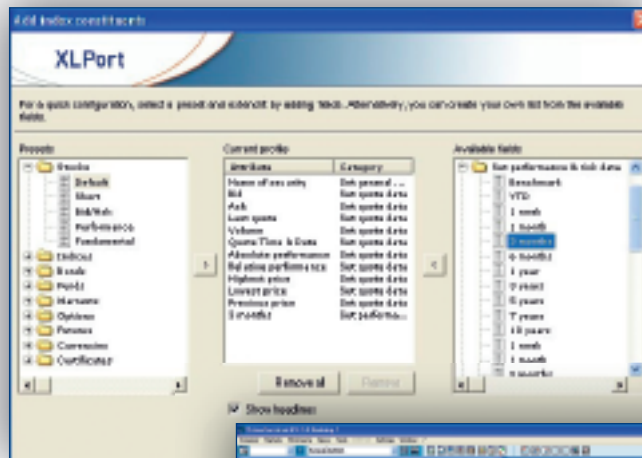


By focusing on its customers' individual needs and requirements, Interactive Data Managed Solutions has helped a broad range of businesses realize efficiencies and optimise workflow processes, while better serving the needs of internal and external end-users.

PrimeTerminal

PrimeTerminal Professional Edition is a customisable financial workstation, geared towards asset management and advisory services. It delivers comprehensive market data, analytics, reference and historical data. Data reporting on a per-user basis allows firms to target deployment. The terminal's intuitive, convenient user interface allows for easy navigation. Wizards support efficient data downloads to MICROSOFT OFFICE® EXCEL via DDE- and RTD-functionality. The PrimeTerminal Private Investor edition offers private investors an interactive, customisable quote list with real-time data and direct links for online trading. The editions differ in data scope, data update rates and available market depth.

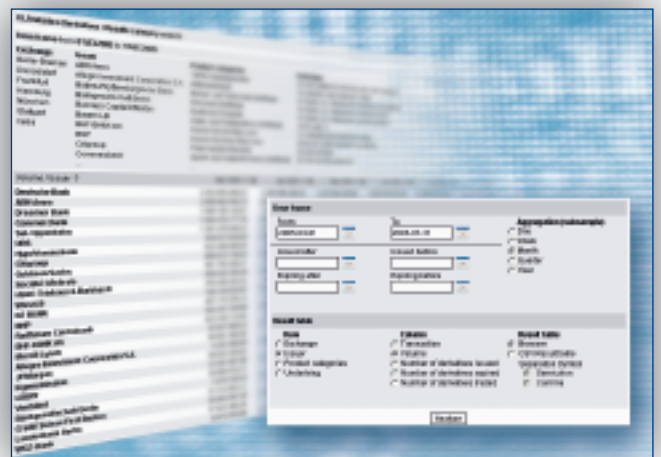
Enhance Investment And Sales Processes



PrimeContent

PrimeContent focuses on the delivery of fundamental, analytical and historical data files to financial service providers, vendors and software companies. File formats and delivery modalities can be tailored to individual customer requirements. PrimeContent also includes Contribution Suite for the distribution of proprietary market data to other market members.

Efficiently Distribute And Receive Market Data





About Interactive Data Corporation

Interactive Data Corporation (NYSE: IDC) is a leading global provider of financial market data, analytics and related solutions to financial institutions, active traders and individual investors. Interactive Data, headquartered in Bedford, Mass., has approximately 2,400 employees in offices located throughout North America, Europe, Asia and Australia.

Interactive Data's Managed Solutions business is a leading provider and operator of customized financial information systems. The group builds and manages Web-based financial market data portals and terminals for a range of organizations worldwide, from retail and investment banks to asset managers, online brokers, stock exchanges and media portals. By aggregating a broad set of financial data and client-proprietary content and offering visually stunning features such as charts, sophisticated search functions, decision-support tools and analytics, these intuitive applications can help customers optimize their business processes and realize efficiencies. This group is managed as part of the Interactive Data's Real-Time Services business, which provides a comprehensive suite of offerings that includes PlusFeedSM, a consolidated, low-latency digital datafeed.

For more information about Interactive Data and its businesses, please visit www.interactivedata.com.

Amsterdam ■ Bedford ■ Boston ■ Chicago ■ Cologne ■ Dublin ■ Fort Lauderdale ■ Frankfurt ■ Geneva ■ Glasgow ■ Helsinki ■ Hong Kong ■ Houston ■ Jersey, CI ■ London
Los Angeles ■ Luxembourg ■ Madrid ■ Melbourne ■ Milan ■ New York ■ Paris ■ Rome ■ San Francisco ■ Santa Monica ■ Singapore ■ Sydney ■ Tokyo ■ Zurich

Frankfurt

Sandweg 94
60316 Frankfurt am Main
Germany
Tel: +49 (0)69 50 50 30 0
Fax: +49 (0)69 50 50 30 505

Helsinki

Luotsikatu 13
00160 Helsinki
Finland
Tel: +358 (0)9 68 60 6717
Fax: +358 (0)9 68 60 6710

London

Fitzroy House, 13-17 Epworth Street
London EC2A 4DL
United Kingdom
Tel: +44 (0)20 78 25 8000
Fax: +44 (0)20 78 25 7701

Madrid

C/ María de Molina 37 bis
28006 Madrid
Spain
Tel: +34 (91)745 21 05
Fax: +34 (91)745 21 06

Milan

Via Mauro Macchi, 44
20124 Milan
Italy
Tel: +39 02 6719151
Fax: +39 02 671915 40

New York

100 William Street, 17th Floor
New York, NY 10038
United States of America
Tel: +1 212 2 69 6300
Fax: +1 212 7 71 69 87

Paris

9, Rue de Téhéran
75008 Paris
France
Tel: +33 (0)1 56 69 50 70
Fax: +33 (0)1 56 69 50 79

Zurich

Loewenstrasse 2
8001 Zurich
Switzerland
Tel: +41 (0)44 276 46 11
Fax: +41 (0)44 276 46 01

Interactive Data Managed Solutions ■ www.interactivedata-ms.com ■ info-ms@interactivedata.com
Interactive DataSM and the Interactive Data logo are service marks of Interactive Data Corporation.

This document is provided for informational purposes only. The information contained in this document is subject to change without notice and does not constitute any form of warranty, representation, or undertaking. Nothing herein should in any way be deemed to alter the legal rights and obligations contained in agreements between Interactive Data Corporation and its clients relating to any products or services described herein. Nothing herein is intended to constitute legal, tax or other professional advice. Interactive Data Corporation makes no warranties whatsoever either express or implied, as to merchantability, fitness for a particular purpose, or any other matter. Without limiting the foregoing, Interactive Data Corporation makes no representation or warranty that any data or information (including, but not limited to, evaluations) supplied to or by it are complete or free from errors, omissions, or defects.